

CERTIFICATE OF ANALYSIS

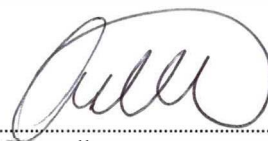
SAMPLE NAME		Jasmine Absolute	
FORM		Oil	
CUSTOMER NAME		Buckley & Phillips Aromatics	
CERTIFICATION DATE		05 July 2019	
CUSTOMER REFERENCE		Batch: 29916/35 Ref: 1200061	
ARL JOB #	A191478	LAB REF. #	ARL1904039
ANALYSIS	GCFID - Area%	METHOD	ARL-TM101

TEST	RESULTS	TEST METHOD
	Area %	
linalool	10.86	ARL-TM101-3*
benzyl alcohol	3.31	
benzyl acetate	24.63	
eugenol	5.67	
trans-jasmone	1.98	
trans-trans-farnesene	0.77	
phytol	3.53	
benzyl benzoate	29.26	
geranyl linaloate	1.26	
iso-phytol	2.07	
methyl linolenate	1.57	
phytol acetate	4.59	

* Assay by GC (FID detection –area percent report)



.....
Samantha Morrow
ANALYTICAL OFFICER



.....
Ashley Dowell
MANAGER - ARL

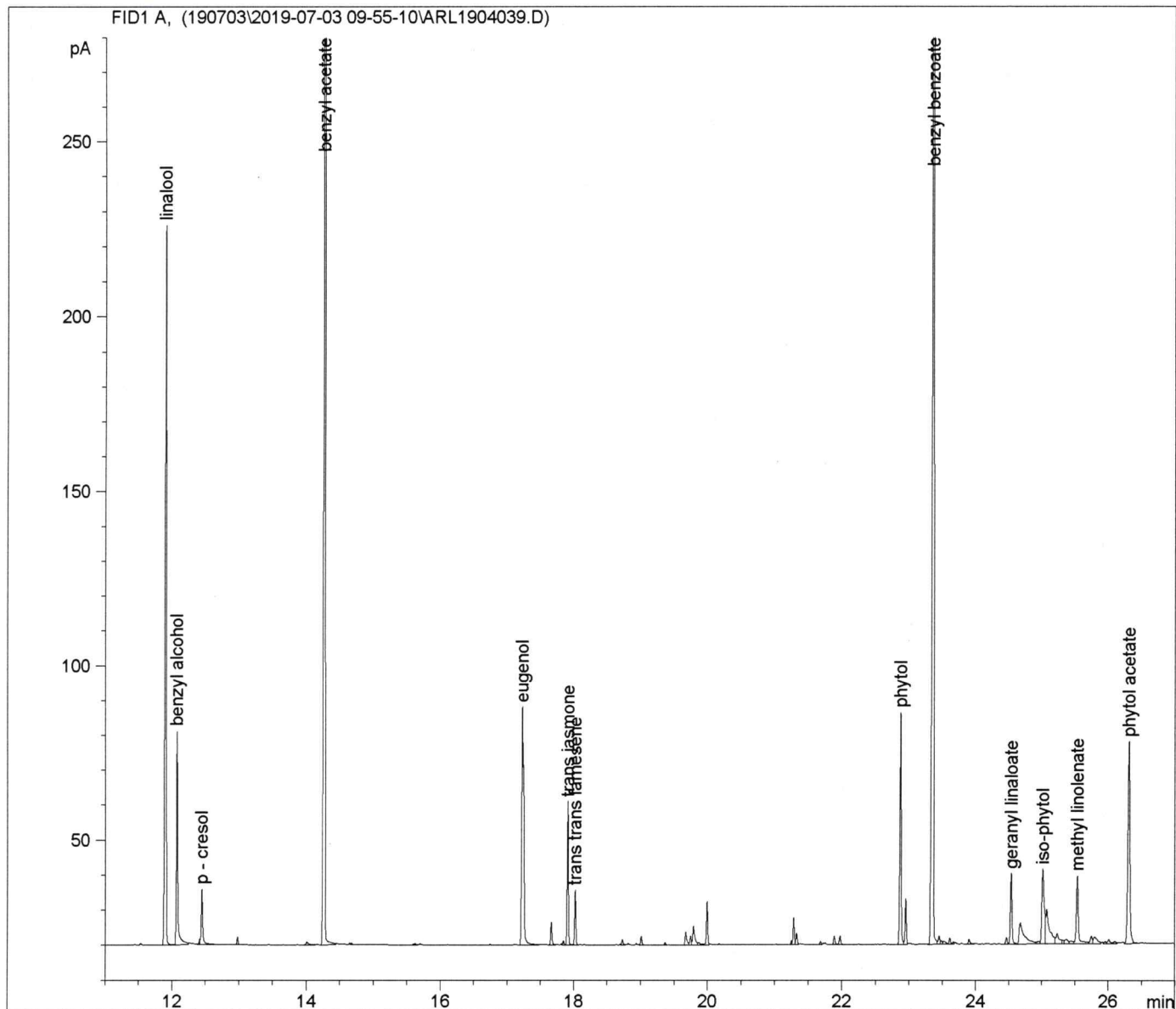
Sample Name: JASMINEABSOLUTE BATCH:29916/35 REF:1200061

```

=====
Acq. Operator   : Anastasia Whitehall           Seq. Line :   22
Acq. Instrument : GC-3                         Location  : Vial 20
Injection Date  : 7/4/2019 1:12:41 AM          Inj       :    1
                                                Inj Volume: 1 µl

Acq. Method     : C:\DATA\GC-3\DATA\190703\2019-07-03 09-55-10\JASMINE.M
Last changed    : 6/6/2019 4:04:24 AM by bl
Analysis Method : C:\DATA\GC-3\METHODS\JASMINE.M
Last changed    : 7/4/2019 9:54:59 AM by Regan Barker
                  (modified after loading)

Method Info     : Method to analyse essential oils
    
```



Handwritten signature
07/07/19

Sample Name: JASMINEABSOLUTE BATCH:29916/35 REF:1200061

=====
Area Percent Report
=====

Sorted By : Signal
Calib. Data Modified : 7/4/2019 9:54:59 AM
Multiplier: : 1.0000
Dilution: : 1.0000
Use Multiplier & Dilution Factor with ISTDs

Signal 1: FID1 A,

Peak #	RetTime [min]	Type	Width [min]	Area [pA*s]	Area %	Name
1	11.899	VV	0.0219	290.08673	10.85752	linalool
2	12.072	VV	0.0214	88.38039	3.30795	benzyl alcohol
3	12.443	VB	0.0227	24.42407	0.91416	p - cresol
4	14.267	VV	0.0218	658.08881	24.63130	benzyl acetate
5	17.221	VV	0.0305	151.55711	5.67256	eugenol
6	17.907	VV	0.0206	52.88775	1.97951	trans jasmone
7	18.019	VV	0.0204	20.69142	0.77445	trans trans farnesene
8	22.867	VV	0.0226	94.44255	3.53485	phytol
9	23.353	VV	0.0231	781.69812	29.25781	benzyl benzoate
10	24.532	VV	0.0271	33.70893	1.26168	geranyl linaloate
11	25.011	VV	0.0365	55.42485	2.07447	iso-phytol
12	25.534	VV	0.0335	42.01701	1.57264	methyl linolenate
13	26.305	VV	0.0313	122.51978	4.58574	phytol acetate

Totals : 2415.92753 90.4246

=====
*** End of Report ***

✓
04/07/19