


### CERTIFICATE OF ANALYSIS

<b>SAMPLE NAME</b>	Lavender TAS		
<b>FORM</b>	Oil		
<b>CUSTOMER NAME</b>	Buckley & Phillips Aromatics		
<b>CERTIFICATION DATE</b>	04 September 2019		
<b>CUSTOMER REFERENCE</b>	1200068		
<b>ANALYSIS</b>	GCFID - Area%		
<b>ARL JOB #</b>	A192069	<b>LAB REF. #</b>	ARL1905720

TEST	RESULTS Area %	SPECIFICATION					TEST METHOD
		BP 2018 RANGE	FRENCH ISO 3515	AUST ISO 3515	GROSSO ISO 8902	SPIKE ISO 4719	
δ-limonene	0.61	<1.0	0-0.5	0-0.5	0.5-1.5	0.5-3.0	ARL-TM101*
cis-β-ocimene	3.07	-	4.0-10.0	3.0-9.0	0.5-1.5	-	
octan-3-one	2.27	0.1-5.0	tr-2.0	2.0-5.0	-	-	
1,8-cineole	0.86	<2.5	0-1.0	0-1.0	4.0-8.0	16.0-39.0	
trans-β-ocimene	2.43	-	1.5-6.0	0.5-1.0	tr-1.0	-	
linalool	34.28	20.0-45.0	25.0-38.0	25.0-38.0	24.0-37.0	34.0-50.0	
camphor	0.19	<1.2	tr-0.5	0-0.5	6.0-8.5	8.0-16.0	
terpinen-4-ol	1.89	0.1-8.0	2.0-6.0	1.5-6.0	1.5-5.0	-	
lavandulol	1.06	>0.1	>0.3	>0.3	0.2-1.0	-	
α-terpineol	1.20	<2.0	0-1.0	0-1.0	0.3-1.3	0.2-2.0	
linalyl acetate	28.69	25.0-47.0	25.0-45.0	25.0-45.0	25.0-38.0	tr-1.6	
lavandulyl acetate	3.03	>0.2	>0.2	>1.0	1.5-3.5	-	

\* Assay by GC (FID detection)

tr - denotes trace



Anastasia Whitehall  
LABORATORY ASSISTANT



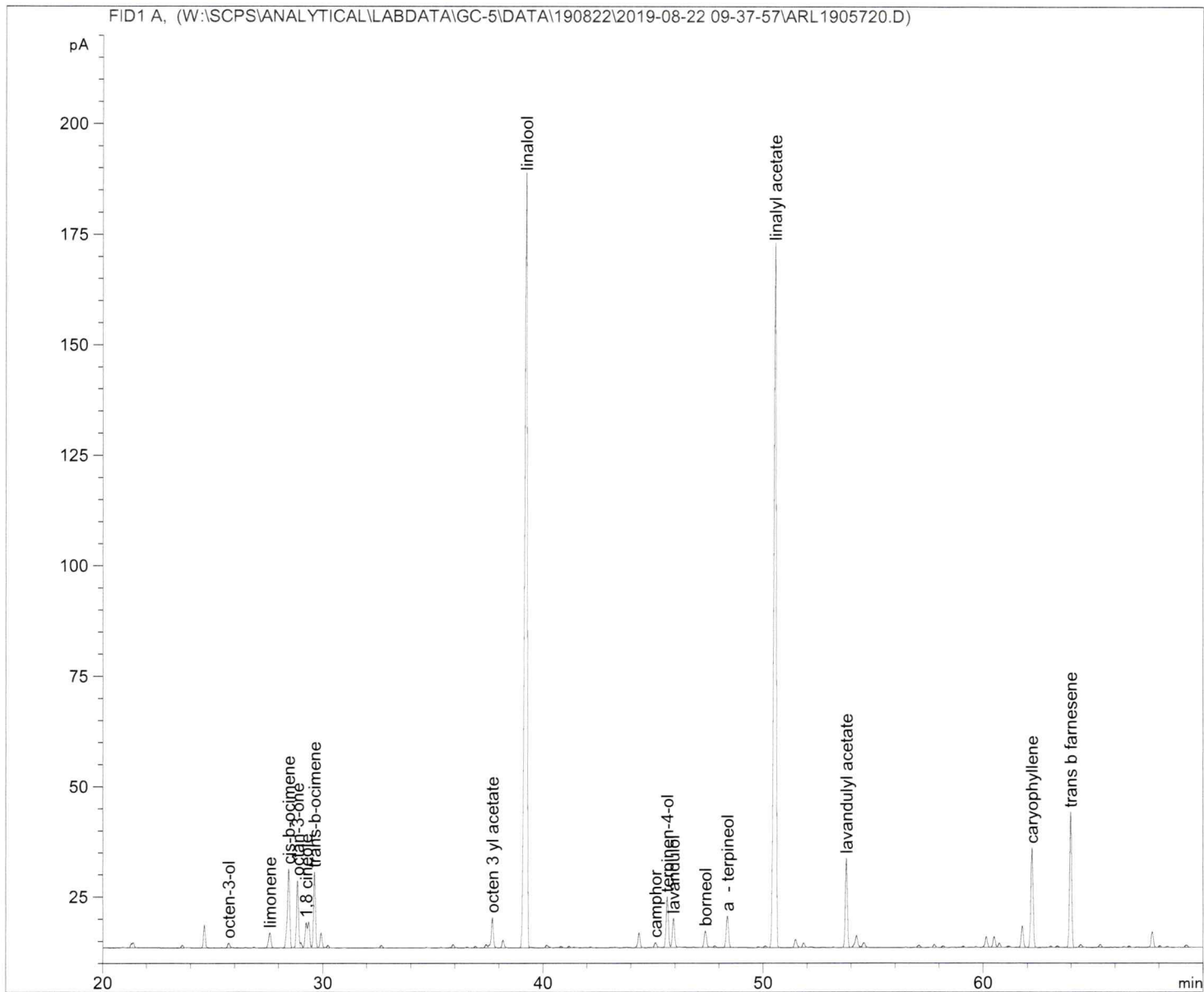
Ashley Dowell  
MANAGER - ARL

Sample Name: Lavender TAS 1200068

```

=====
Acq. Operator   : JB                               Seq. Line :    4
Acq. Instrument : GC-5                           Location  : Vial 6
Injection Date  : 22/08/2019 2:18:45 PM          Inj       :    1
                                                    Inj Volume: 1.000 µl

Acq. Method    : C:\DATA\GC-5\DATA\190822\2019-08-22 09-37-57\LAVENDER.M
Last changed   : 30/05/2019 2:01:51 AM by Ana & Mary
Analysis Method : W:\SCPS\ANALYTICAL\LABDATA\GC-5\METHODS\LAVENDER.M
Last changed   : 28/08/2019 9:39:12 AM
                (modified after loading)
Method Info    : Method to analyse essential oil
    
```



Area Percent Report

```

=====
Sorted By      :      Signal
Calib. Data Modified : 28/08/2019 9:39:12 AM
Multiplier:    :      1.0000
Dilution:      :      1.0000
Do not use Multiplier & Dilution Factor with ISTDs
    
```

640  
28/8/19

Sample Name: Lavender TAS 1200068

Signal 1: FID1 A,

Peak #	RetTime [min]	Type	Width [min]	Area [pA*s]	Area %	Name
1	25.733	BB	0.0842	7.28915	0.1689	octen-3-ol
2	27.611	BB	0.1069	26.50685	0.6140	limonene
3	28.463	BV	0.1019	132.49319	3.0692	cis-b-ocimene
4	28.864	VV	0.0872	97.85317	2.2667	octan-3-one
5	29.254	VV	0.0840	36.94033	0.8557	1,8 cineole
6	29.635	VV	0.0868	105.06429	2.4338	trans-b-ocimene
7	37.716	VB	0.1008	46.80600	1.0842	octen 3 yl acetate
8	39.261	BB	0.1137	1479.80237	34.2792	linalool
9	45.120	BB	0.0967	8.39545	0.1945	camphor
10	45.652	BV	0.0937	81.62546	1.8908	terpinen-4-ol
11	45.937	VB	0.0943	45.62051	1.0568	lavandulol
12	47.390	BB	0.0989	27.34339	0.6334	borneol
13	48.391	BB	0.0981	51.64250	1.1963	a - terpineol
14	50.575	VB	0.1038	1238.63806	28.6927	linalyl acetate
15	53.798	BB	0.0835	130.94995	3.0334	lavandulyl acetate
16	62.221	BB	0.0889	165.50850	3.8340	caryophyllene
17	63.989	BB	0.0782	197.53830	4.5759	trans b farnesene

Totals : 3880.01747 89.8796

\*\*\* End of Report \*\*\*

*6/6  
28/8/19*