

CERTIFICATE OF ANALYSIS

SAMPLE NAME		Ylang Ylang Complete	
FORM		Oil	
CUSTOMER NAME		Buckley & Phillips Aromatics	
CERTIFICATION DATE		06 May 2019	
CUSTOMER REFERENCE		30450/14	
ARL JOB #	A190904	LAB REF. #	ARL1902304
ANALYSIS	GCFID - Area%	METHOD	ARL-TM101-3

TEST	RESULTS Area %	TEST METHOD				
		ISO 3063	ISO 3063	ISO 3063	ISO 3063	ISO 3063
		TYPE 1	TYPE 2	TYPE 3	EXTRA	SUPER X
prenyl acetate	0.17	0.3 to 1.8	0.2 to 0.9	0.1 to 0.2	1.0 to 2.3	1.5 to 3.2
p-cresyl methyl ether	2.73	3.0 to 8.5	2 to 5	0.1 to 1.0	5 to 13	7 to 13
methyl benzoate	1.28	1.5 to 5.5	1.0 to 3.5	0.1 to 0.8	4 to 6.5	4.5 to 8.0
linalool	7.59	3 to 10	2 to 6	0.1 to 2.0	7 to 12	8 to 13
benzyl acetate	1.34	6 to 14	4 to 8	0.5 to 3.0	11 to 17.5	14 to 20
geraniol	1.13	0.1 to 0.3	0.1 to 0.3	trace to 0.1	0.1 to 0.5	0.1 to 0.7
geranyl acetate	5.69	2 to 5	1.7 to 6.0	0.4 to 3.0	2.5 to 6	2 to 6
trans - cinnamyl acetate	0.41	2.2 to 5	2.0 to 4.8	0.5 to 2.5	3 to 6.5	4 to 6
β-caryophyllene	13.83	4 to 10	4.8 to 14	5 to 15	2.5 to 8	2 to 6
germacrene – D	19.18	10 to 24	16 to 28	20 to 35	14 to 20	9 to 15
trans, trans farnesene	9.20	7 to 18	14 to 21	12 to 29	6.5 to 15	2 to 6
trans, trans farnesol	1.70	0.8 to 2.0	0.8 to 3.0	0.8 to 3.0	0.8 to 1.6	0.8 to 1.5
benzyl benzoate	7.47	4.2 to 9.2	4.5 to 7.8	4 to 8	4 to 6	3 to 6
trans, trans farnesyl acetate	1.93	1 to 4	1.0 to 3.5	1.5 to 5.0	1.0 to 3.0	1.0 to 3.0
benzyl salicylate	1.86	2 to 4	2 to 4	2.5 to 4.8	2.0 to 3.8	1.5 to 3.5

* Assay by GC (FID detection –area percent report)

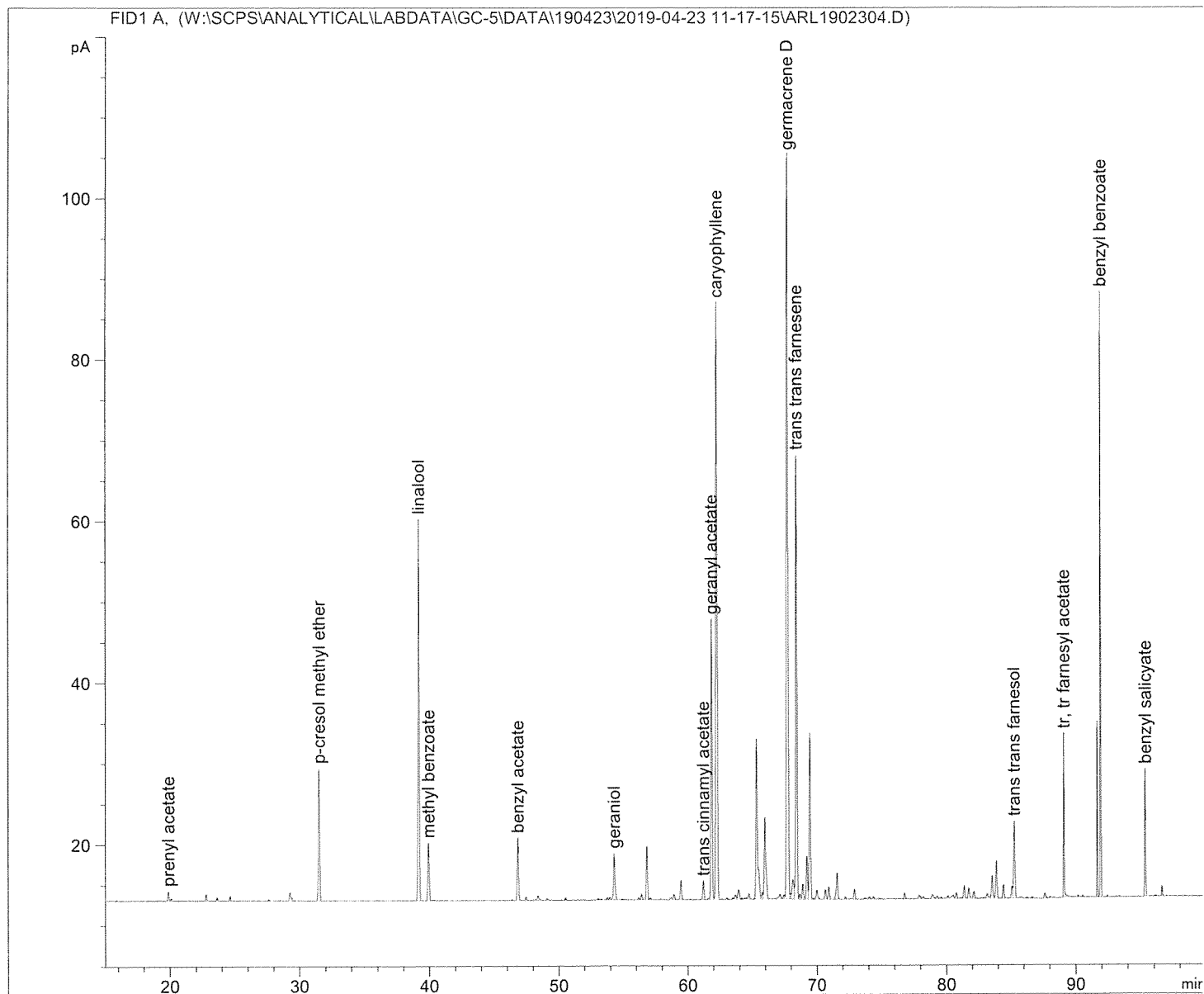

 Dr Jeanette Balindong
 ANALYTICAL OFFICER


 Mr Ashley Dowell
 MANAGER - ARL

Sample Name: Ylang Ylang Complete

```

=====
Acq. Operator   : Ana & Regan                      Seq. Line :   13
Acq. Instrument : GC-5                            Location  : Vial 9
Injection Date  : 24/04/2019 6:29:41 AM           Inj       :    1
                                                    Inj Volume: 1.000 µl
Acq. Method     : C:\DATA\GC-5\DATA\190423\2019-04-23 11-17-15\YLANG YLANG.M
Last changed    : 30/01/2019 3:33:11 PM by Jeanette Balindong
Analysis Method : W:\SCPS\ANALYTICAL\LABDATA\GC-5\METHODS\YLANG YLANG.M
Last changed    : 2/05/2019 4:29:37 PM
                  (modified after loading)
Method Info     : Method to analyse essential oil
=====
    
```



Area Percent Report

```

Sorted By      : Signal
Calib. Data Modified : 2/05/2019 4:22:40 PM
Multiplier:    : 1.0000
Dilution:     : 1.0000
Do not use Multiplier & Dilution Factor with ISTDs
    
```

g/b
2/5/19

Sample Name: Ylang Ylang Complete

Signal 1: FID1 A,

Peak #	RetTime [min]	Type	Width [min]	Area [pA*s]	Area %	Name
1	19.878	BV	0.0805	6.92223	0.1694	prenyl acetate
2	31.505	BB	0.0945	111.63102	2.7317	p-cresol methyl ether
3	39.182	BB	0.0897	310.14395	7.5895	linalool
4	39.929	BB	0.1052	52.14562	1.2760	methyl benzoate
5	46.821	BB	0.0947	54.83905	1.3420	benzyl acetate
6	54.287	VB	0.1047	46.26086	1.1320	geraniol
7	61.194	BB	0.0901	16.82754	0.4118	trans cinnamyl acetate
8	61.846	VV	0.0811	232.42087	5.6875	geranyl acetate
9	62.261	VV	0.1012	565.09637	13.8284	caryophyllene
10	67.751	VV	0.1092	783.61444	19.1757	germacrene D
11	68.432	VV	0.0837	375.89465	9.1984	trans trans farnesene
12	85.256	VB	0.0888	69.42291	1.6988	trans trans farnesol
13	89.094	BB	0.0523	78.91830	1.9312	tr, tr farnesyl acetate
14	91.951	VB	0.0605	305.21185	7.4688	benzyl benzoate
15	95.348	BB	0.0723	75.97495	1.8592	benzyl salicyate

Totals : 3085.32463 75.5004

=====
*** End of Report ***6/10
2/5/19