

CERTIFICATE OF ANALYSIS

SAMPLE NAME	Lavender Spike		
FORM	Oil		
CUSTOMER NAME	Buckley & Phillips Aromatics		
CERTIFICATION DATE	04 September 2019		
CUSTOMER REFERENCE	1200070		
ANALYSIS	GCFID - Area%		
ARL JOB #	A192069	LAB REF. #	ARL1905722

TEST	RESULTS Area %	SPECIFICATION					TEST METHOD
		BP 2018 RANGE	FRENCH ISO 3515	AUST ISO 3515	GROSSO ISO 8902	SPIKE ISO 4719	
δ-limonene	0.98	<1.0	0-0.5	0-0.5	0.5-1.5	0.5-3.0	ARL-TM101*
cis-β-ocimene	0.55	-	4.0-10.0	3.0-9.0	0.5-1.5	-	
octan-3-one	0.20	0.1-5.0	tr-2.0	2.0-5.0	-	-	
1,8-cineole	23.92	<2.5	0-1.0	0-1.0	4.0-8.0	16.0-39.0	
trans-β-ocimene	0.04	-	1.5-6.0	0.5-1.0	tr-1.0	-	
linalool	46.15	20.0-45.0	25.0-38.0	25.0-38.0	24.0-37.0	34.0-50.0	
camphor	10.66	<1.2	tr-0.5	0-0.5	6.0-8.5	8.0-16.0	
terpinen-4-ol	0.27	0.1-8.0	2.0-6.0	1.5-6.0	1.5-5.0	-	
lavandulol	0.06	>0.1	>0.3	>0.3	0.2-1.0	-	
α-terpineol	1.03	<2.0	0-1.0	0-1.0	0.3-1.3	0.2-2.0	
linalyl acetate	0.14	25.0-47.0	25.0-45.0	25.0-45.0	25.0-38.0	tr-1.6	
lavandulyl acetate	0.12	>0.2	>0.2	>1.0	1.5-3.5	-	

* Assay by GC (FID detection)

tr - denotes trace



Anastasia Whitehall
LABORATORY ASSISTANT

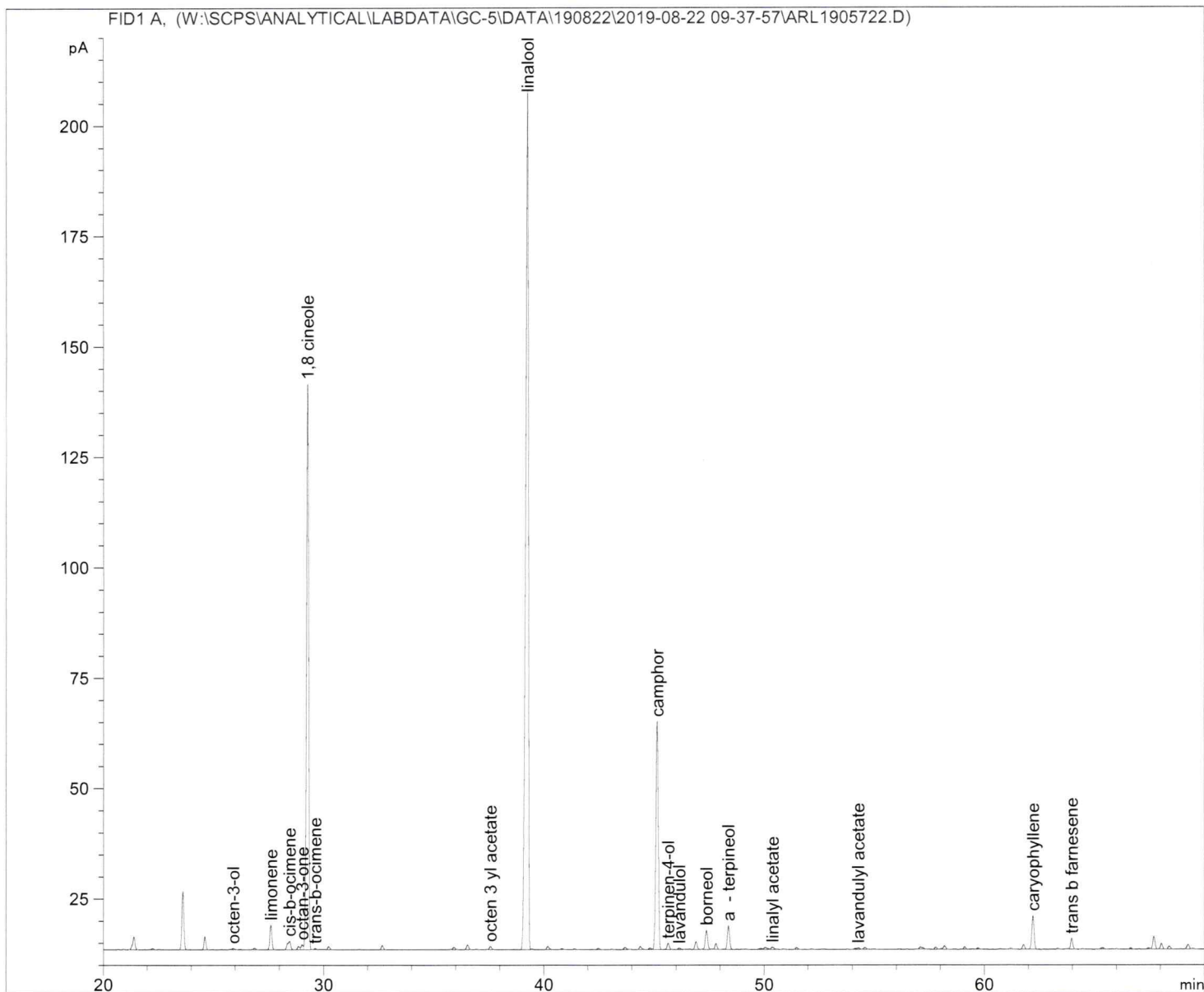


Ashley Dowell
MANAGER - ARL

=====

Acq. Operator	: JB	Seq. Line	: 6
Acq. Instrument	: GC-5	Location	: Vial 8
Injection Date	: 22/08/2019 5:47:29 PM	Inj	: 1
		Inj Volume	: 1.000 µl

Acq. Method : C:\DATA\GC-5\DATA\190822\2019-08-22 09-37-57\LAVENDER.M
Last changed : 30/05/2019 2:01:51 AM by Ana & Mary
Analysis Method : W:\SCPS\ANALYTICAL\LABDATA\GC-5\METHODS\LAVENDER.M
Last changed : 2/09/2019 10:55:34 AM
(modified after loading)
Method Info : Method to analyse essential oil



=====
Area Percent Report
=====

Sorted By : Signal
Calib. Data Modified : 2/09/2019 10:44:00 AM
Multiplier: : 1.0000
Dilution: : 1.0000
Do not use Multiplier & Dilution Factor with ISTDs

JB
2/9/19

Signal 1: FID1 A,

Peak #	RetTime [min]	Type	Width [min]	Area [pA*s]	Area %	Name
1	25.917	BB	0.1108	2.32393	0.0633	octen-3-ol
2	27.620	BB	0.1003	36.12077	0.9833	limonene
3	28.466	BV	0.1487	20.28243	0.5522	cis-b-ocimene
4	29.036	VV	0.0980	7.27101	0.1979	octan-3-one
5	29.289	VB	0.1021	878.80286	23.9244	1,8 cineole
6	29.626	BB	0.0779	1.49142	0.0406	trans-b-ocimene
7	37.585	BB	0.1190	5.70493	0.1553	octen 3 yl acetate
8	39.281	BB	0.1201	1695.13135	46.1479	linalool
9	45.153	VB	0.1146	391.63342	10.6618	camphor
10	45.647	BB	0.1057	9.91283	0.2699	terpinen-4-ol
11	46.150	BB	0.1041	2.04712	0.0557	lavandulol
12	47.394	BB	0.1177	33.12891	0.9019	borneol
13	48.386	BB	0.1091	37.75576	1.0279	a - terpineol
14	50.377	VB	0.1358	5.05942	0.1377	linalyl acetate
15	54.284	BV	0.1764	4.26804	0.1162	lavandulyl acetate
16	62.221	BB	0.1131	55.24669	1.5040	caryophyllene
17	63.981	BB	0.1050	17.10585	0.4657	trans b farnesene

Totals : 3203.28674 87.2057

=====
*** End of Report ***

gls
2/9/19