

● Precautions

To avoid any damage to the product, please follow instructions below:

- Do not allow non-technical staff to transform, disassemble, or repair the product. If the product needs to be repaired, please contact supplier.
- Do not stab, twist, or stretch the power adapter cable. Do not place cable in proximity to high temperatures or put heavy pressure on the cable. Do not cut or repair the cable.
- If the cable is damaged, or the connection is loose, do not use the unit.
- To ensure optimum operation, each time after using the diffuser, please remove the essential/fragrant oil bottle and use a cloth to wipe it clean.
- Do not plug in the adapter in wet areas, such as a bathroom, sauna, greenhouse, etc.
- If there is an unusual smell, noise or abnormal function, then the product or the adapter may be faulty. Please remove the adapter from the power supply socket and discontinue use.
- Essential oil can cause stains. If a spill occurs, use a cloth to wipe immediately.
- Do not let the mist outlet spray directly on furniture, clothes or walls. Avoid placing the diffuser in direct sunlight, or close to an air conditioner, fan or high temperatures.
- Do not block the mist outlet. This may cause damage to the diffuser.
- Place the diffuser unit on a flat, level surface and avoid placing on appliances such as a TV, or audio equipment.
- After extended periods of operation, the unit should be turned off for a few hours.
- Do not touch the product while your hands are wet, in order to avoid risk of electric shock.
- The diffuser should be kept out of reach of children.
- Please read all information in this user manual before operating.

● Fault Causes

FAULT	POTENTIAL CAUSE
Power button is on, but no mist is released, or it shuts off automatically.	Problem: Low battery Solution: Charge the unit for sufficient time that the battery indicator light has stopped flashing, and it is fully charged.
The battery will not charge properly.	Problem: Check cable connections Solution: Separate and re-connect the USB cable from the diffuser unit and repeat with the cable and wall socket adapter.
Power button is on, but mist amount is abnormal or absent.	Problem: Nebuliser may be loose Solution: Place your finger near the mist outlet to feel if there is airflow coming out. If not, switch off power, pull the atomising head out and then re-insert. Problem: Dip tube is loose or blocked Solution: Remove tube from atomising head and clear, then assemble it again and re-insert.
Essential or fragrant oil is leaking out.	Problem: Bottle may not be screwed on securely Solution: Remove the oil bottle and re-attach it again, wiping off any oil residue on the surface of bottle. Problem: The unit has been knocked over Solution: Turn off the unit and take out the atomising head with the bottle. Refer to Accidental Rollover & Cleanup instructions.
Oil pop up button not ejecting atomising head.	Problem: Atomising head has been installed without bottle attached Solution: Insert a skinny rod (such as a skewer) through the hole in the button underneath the unit, and gently push upwards until the atomising head pops up.

● Attention

If you do not plan to use the nebulising unit for a long time, remove the oil bottle, and wipe the atomising head clean. Keep in a dry environment.

Do not use the nebulising diffuser without essential/fragrant oil. If there is no essential/fragrant oil in the bottle, the device will not automatically shut down, and the diffuser must be turned off manually.

Any slight difference in the intensity of the spray is normal. Different types of oils, humidity, temperature and indoor airflow will affect the mist effect. Before changing to another essential oil, please clean the product according to the **Product Cleaning & Maintenance** section.

● Product Cleaning & Maintenance

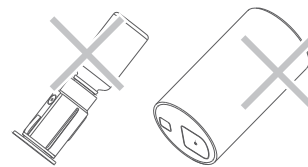
Every 5-6 uses or 3-5 days, or when changing to another scent, please clean the product as follows:

1. Turn off power, unplug the power cable and remove the atomising head.
2. Unscrew the oil bottle from the atomising head.
3. Dilute a small amount of detergent in warm water, and then wipe the unit with a cloth.
4. If you find dirt or foreign matter in the tube, please remove the tube and clean it.

● Accidental Rollover & Cleanup

If you accidentally tip the unit over during use, please follow these instructions:

1. Unplug the power adapter and DC plug from the socket to ensure product is switched off.
2. Unscrew the remaining oil bottle from the spray head.
3. Use a small amount of diluted detergent and wipe the essential oil off the body and spray head with paper towel or cloth. After cleaning let it dry naturally.



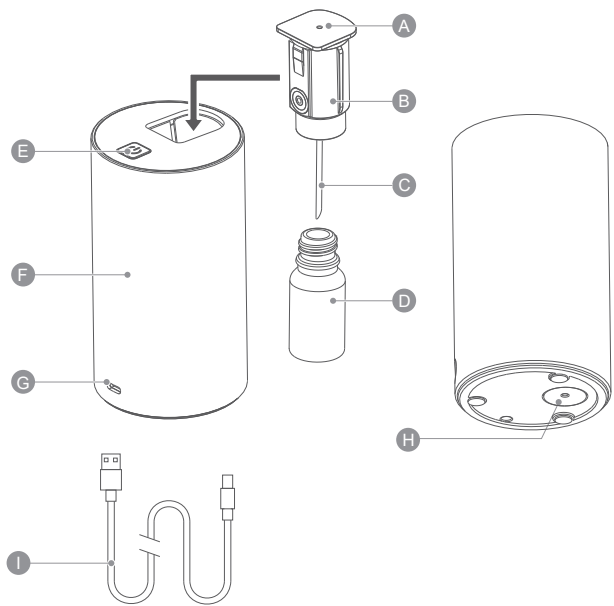
PORTABLE Nebulising Oil Diffuser

USER MANUAL



Read user manual carefully before use.

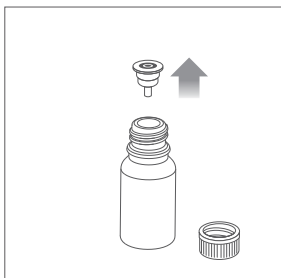
Product Diagram



A. Mist outlet
B. Atomising head
C. Dip tube
D. Essential/fragrant oil bottle
E. Power button

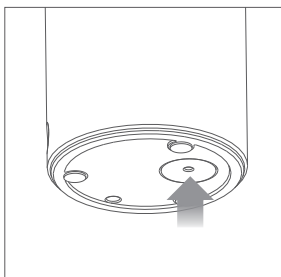
F. Body
G. DC power jack
H. Oil popup button
I. USB-C power cable

Operation Instructions



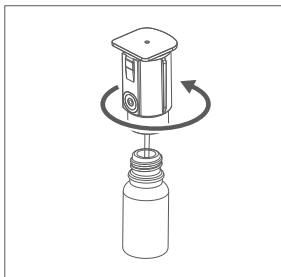
1

Take a 5ml/10ml/12ml bottle of your chosen essential or fragrant oil and unscrew lid. Carefully remove the plastic dripulator plug from the neck of the bottle if present. Set bottle aside.



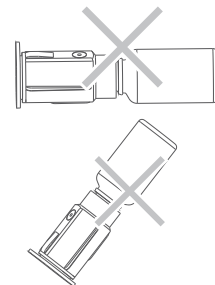
2

Pick up the nebulising unit. Press the round button underneath. Atomising head will pop up from the top.

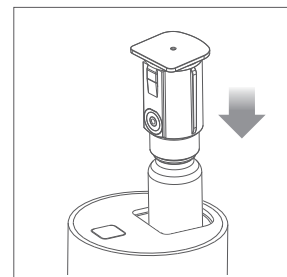


3

Remove atomising head and screw onto the neck of the oil bottle. Ensure it is secure but not too tight.



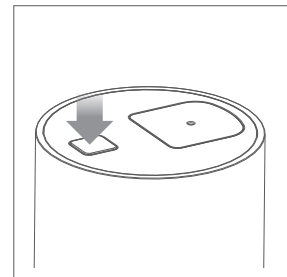
Do not tip the atomising head with an attached oil bottle diagonally or upside down, as there is a risk of oil leakage.



4

Vertically re-insert the atomising head with attached bottle into the nebulising unit and gently press down until the surface is flush.

Do not insert atomising head without a bottle attached.

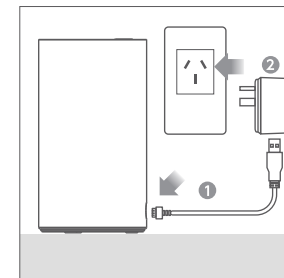


5

Press the power button to begin diffusion.



The nebuliser will operate for 10 seconds on, then 50 seconds off and will automatically shut off after 2 hours.



6

To charge battery - 1. Plug the USB cable into the DC power jack at the base. 2. Connect cable to USB adapter (not inc.) and plug into household power outlet.



When the battery level is low, the indicator light will flash. During charging, the indicator light will keep flashing. When the battery is at full charge, the indicator light will stay on.

Product Specification

Product Size:	(Diameter) 71mm × (Height) 130mm
Input Voltage:	USB 5V
Battery Capacity:	2200mAh
Rated Power:	Approx. 5W
Product Weight:	Approx. 350g
Timing Mode:	Intermittent spray 2 Hrs (10 seconds on, then 50 seconds off)
Raw Materials:	Aluminum alloy + PP + POM
Accessories:	USB Type C cable, user manual

BUCKLEY & PHILLIPS AROMATICS

7/128 Beresford Rd, Lilydale VICTORIA
AUSTRALIA 3140 (03) 9735 3755

WWW.BUCKLEYANDPHILLIPS.COM